

ARMS & NOZZLES



High Vacuum Systems

**Extraction arms save floor space and money.
Offers full suction to hard-to-reach areas.**

Optimal accessibility un

A swing arm offers

- a free and open work space, full freedom of movement and optimal coverage.
- full suction power at hard-to-reach working areas.
- optimal convenience when using on-tool extraction.

Economic and safe solution

Using extraction arms saves floor space as well as money. Hoses are kept off the floor which reduces wear of the vacuum hoses and contributes to better safety in the workshop.

Swing arms SA

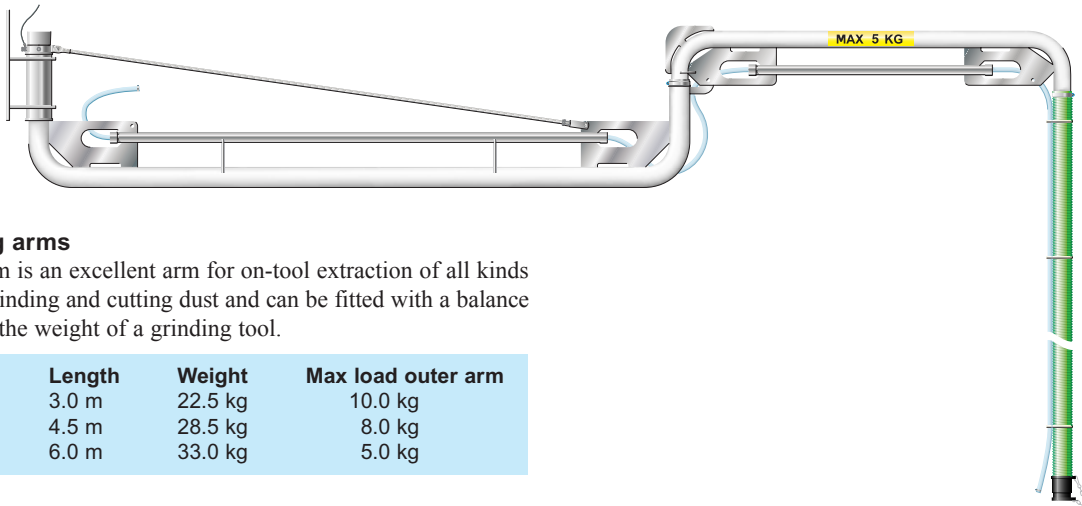
This arm offers maximum convenience when working with on-tool or on-torch extraction. Also ideal for the combination of grinding and welding applications.

User friendly

The design ensures that the arm smoothly follows the hand tool, for instance a sander, grinder, cutter or a welding torch. It supplies power to the tool and removes the dust.

These corrosion-resistant arms are equipped with two swivel points and are made of galvanized pipe.

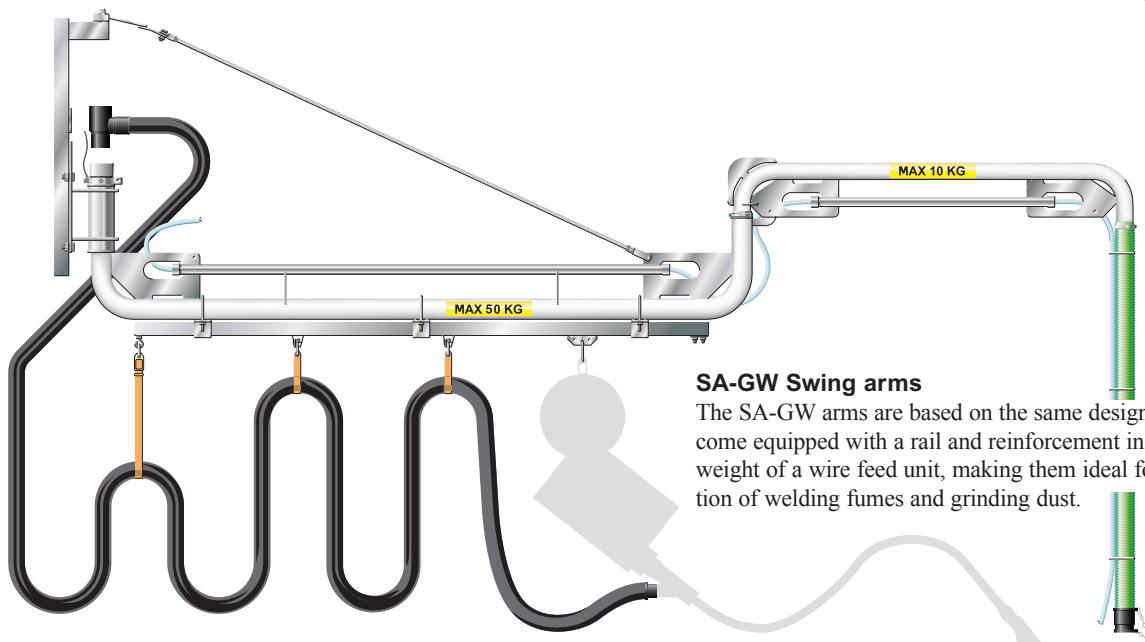
An integral compressed air hose comes as standard with the arm, enabling the user to conveniently connect an air-powered tool. Alternatively, the arm can be fitted with a cable for electric tools. For optimum efficiency, the use of an automatic vacuum valve is strongly recommended.



SA-G Swing arms

The SA-G arm is an excellent arm for on-tool extraction of all kinds of sanding, grinding and cutting dust and can be fitted with a balance block to take the weight of a grinding tool.

Description	Length	Weight	Max load outer arm
SA-G 300	3.0 m	22.5 kg	10.0 kg
SA-G 450	4.5 m	28.5 kg	8.0 kg
SA-G 600	6.0 m	33.0 kg	5.0 kg



SA-GW Swing arms

The SA-GW arms are based on the same design as the SA-G, but come equipped with a rail and reinforcement in order to support the weight of a wire feed unit, making them ideal for a combined extraction of welding fumes and grinding dust.

Description	Length	Weight	Max load inner arm	Max load outer arm
SA-GW 300	3.0 m	54.0 kg	50.0 kg	10.0 kg
SA-GW 450	4.5 m	60.0 kg	50.0 kg	10.0 kg
SA-GW 600	6.0 m	65.0 kg	50.0 kg	10.0 kg

Under varying conditions!

Well balanced and flexible

Perfectly balanced and easily positioned for the extraction of welding and soldering fumes, in cases when the use of on-torch extraction is not possible.

Silent and effective

The arm can be equipped with a noise reducing nozzle, designed for high vacuum, which makes the extraction noise level considerably lower. The nozzle can be fitted to the balance arm, to a suction base or magnetic base (see page 4).

Balance arms BA

The universal BA balance arms make the hard-to-reach workpoints much easier to access. They are ideal for the extraction of welding and soldering fumes, where the use of on-torch extraction is not possible. The arms can be equipped with all suction nozzles within the High Vacuum Systems programme (see page 4).

Easy and stable to operate

The arms are designed with two gas spring balanced sections. They have five swivel points, making it easy to move the arms to any position within their reach. Balance arms can easily be mounted to a wall, a workbench or to an EA extension arm.



BA arm with bench bracket



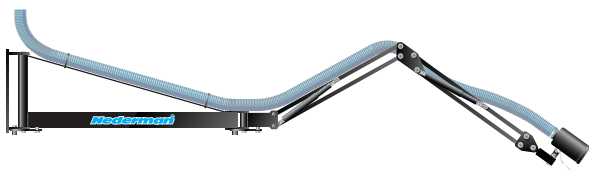
BA arm with wall bracket

Description	Length	Weight
BA 150, balance arm	1.5 m	4.4 kg
BA 250, balance arm	2.5 m	7.5 kg
BA 350, balance arm	3.5 m	8.7 kg

Description	Length	Weight
Bench bracket BA arms	0.35 m	3.0 kg
Wall bracket BA arms	0.085 m	5.3 kg
Wall bracket BA arms	0.5 m	6.3 kg

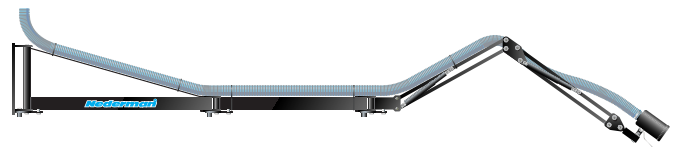
Extension arms EA

The EA extension arms are designed to extend the reach of a BA balance arm, up to 8 metres. The EA arms are made from rectangular steel profile for maximum torsional stability. The extension arm should be mounted to a rigid wall or other vertical surface. The adjustable friction brake makes it easy to mount and position the arm.



EA 250

The EA 250 is equipped with one swivel and has a length of 2.5 metres.



EA 450

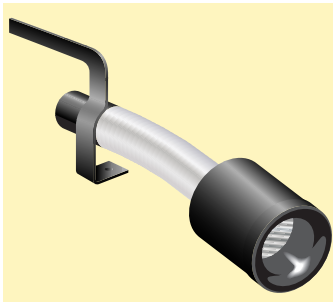
The EA 450 is equipped with two swivels for extra flexibility and has a length of 4.5 metres.

Description	Length	Weight	Max load inner arm
EA 250	2.5 m	45.0 kg	50.0 kg
EA 450	4.5 m	55.0 kg	50.0 kg

Extraction nozzles for welding fumes

Extraction nozzles are available in a large variety for almost any job where professional extraction of welding or soldering fumes is necessary. The CWN-S nozzles are designed for use with high vacuum.

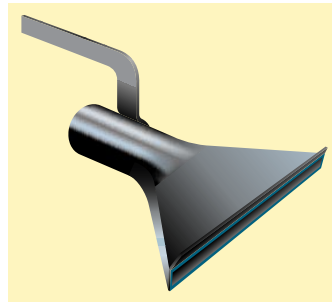
All nozzles can be connected to the BA balance arm as well as magnetic bases, or suction bases for non-magnetic surfaces.



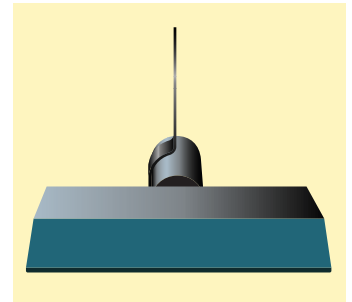
CWN-S 105/50 L
Noise reducing nozzle with flexible steel tube extension.
Diameter: 105 mm
Length: 490 mm
Connection dia 50 mm (male)



CWN-S 105/40, 50, 63
Noise reducing nozzle.
Diameter: 105 mm
Length: 183 mm
Connection dia 40 mm (male)
Connection dia 50 mm (male)
Connection dia 63 mm (male)

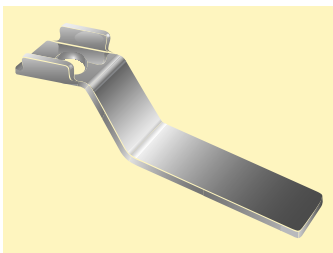


FWN 200/50 and FWN 400/50
Fish tail nozzles
Width: 200 / 400 mm
Connection dia 50 mm (male)

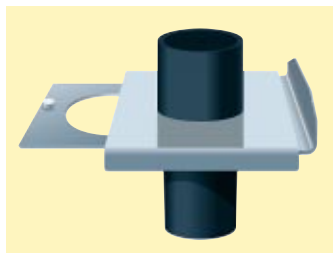


SWN 300/50 and SWN 500/50
Slotted nozzles
Width: 300 / 500 mm
Connection dia 50 mm (male)

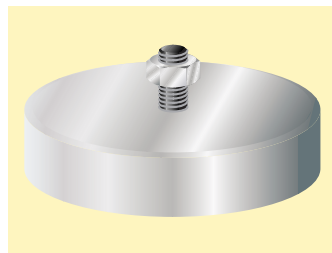
Extraction nozzle accessories



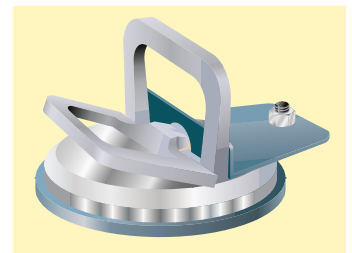
Handle CWN-S
Handle, to be fitted to the CWN-S between extraction nozzle and balance arm.



Shut-off valve
In-line shut-off valve, suitable for extraction nozzles with connection dia 50 mm (male and female).



Magnetic base
Magnetic base, suitable for all nozzles.
Diameter: 100 mm.
Thread: M10.



Suction base
Suction base, suitable for all nozzles when working with non-magnetic materials.
Diameter: 115 mm.
Thread: M10.

Nederman[®]
Improving your workspace

Rights reserved for modification of design and measurements.

Manufacturer:
TEDAK AB
Svista
SE-635 02 Eskilstuna, Sweden
a Nederman company



www.tedak.com
Tel: Int +46 16-160700
Fax: Int +46 16-142627